

Number and Place Value

Rounding numbers



Rounding to the nearest 100

Numbers ending in 0s, 10s, 20s, 30s and 40s get rounded **down**
Numbers ending in 50s, 60s, 70s, 80s and 90s get rounded **up**

Examples:

237	→	200	1168	→	1200
874	→	900	2032	→	2000
536	→	500	5750	→	5800
350	→	400	40081	→	40100

Even and Odd Numbers

Even Numbers end in

0 2 4
6 8

Examples: 4, 56, 730

Odd Numbers end in

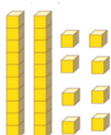
1 3
5 7 9

Examples: 9, 83, 641

Partitioning

Which Partitioning?

28

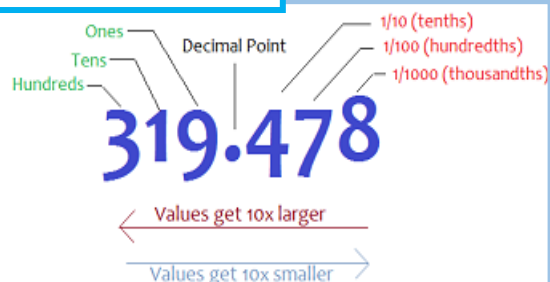


Partitioned in **standard form** it is
2 tens and 8 ones



Partitioned in **non-standard form**
it could be 10 + 18 or 1 + 27 or...

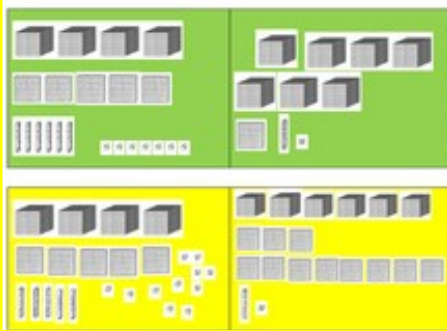
Decimal Numbers



Standard and Non-Standard Partition

4 567

7111



Time

Keywords:

Morning
Afternoon
Night
Tomorrow
Yesterday
Day
Week
Month
Second
Minute
Hour

60 seconds = 1 minute

60 minutes = 1 hour

24 hours = 1 day

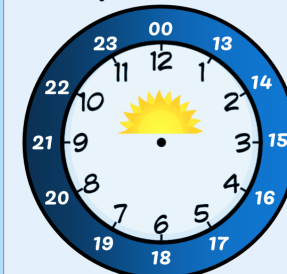
7 days = 1 week

365 days = 1 year

52 weeks = 1 year

10 years = 1 decade

Converting 12 and 24 hour clocks



Add 12 to the hours between 1:00 and 11:59 PM and eliminate "PM"

1:00 PM = 13:00	7:00 PM = 19:00
2:00 PM = 14:00	8:00 PM = 20:00
3:00 PM = 15:00	9:00 PM = 21:00
4:00 PM = 16:00	10:00 PM = 22:00
5:00 PM = 17:00	11:00 PM = 23:00
6:00 PM = 18:00	

CHALLENGE A

- I am between 8am and 4pm.
- My hour will change in the next half an hour.
- I am an even number of minutes past the hour.
- My hour is a multiple of 3.

What time am I? _____

A 09:34	B 13:51	C 12:08	D 15:39
E 17:27	F 14:45	G 19:12	H 11:36